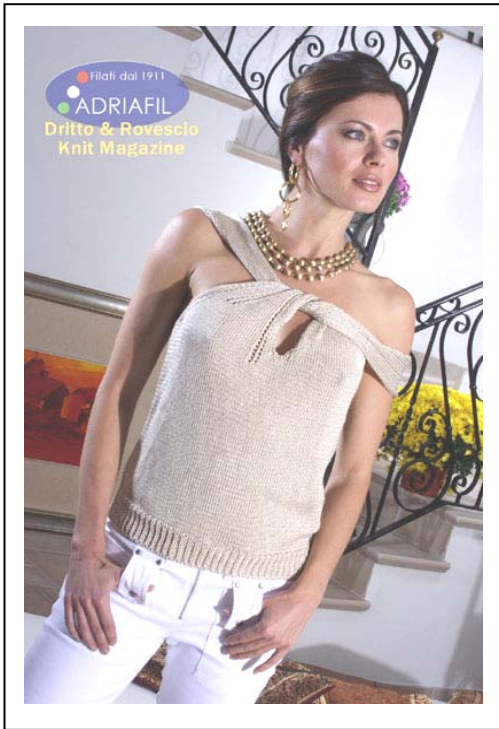


The “Gladiolo” Summer Top



Selman's Creative Craft

Size cms 86 (90 94)

Adriafile Yarn - “ **Chance** ”

5 x 50gm balls

Needles - 1 pair 4 mm

Tapestry Needle

Tension :- 24sts. and 30 rows = 10cm square in
Stocking stitch using 4 mm needles

Abbreviations-

k	knit
p	purl
st	stitch
rep	repeat
yo	yarn over
tbl	through back of loop
st st	stocking stitch
beg	beginning
cont	continue
tog	together
dec	decrease
patt	pattern

Pattern Stitches

Rib stitch (k1,p1)

Twisted rib (k1/p1 in back loop)

Stocking stitch

Eyelet stitch (work over 4 sts.):

Row 1: (yo, k2 tog.) twice

Row 2: purl.

These 2 rows form pattern.

Stock stitch to end the rib.

Back:

Cast on 86 (90-94) sts. work 2 rows in rib st. Change to twisted rib as follows:- k1 tbl, p1 tbl. rep. to end. Cont. for 6 cm. Change to st st, inc 18 sts. across 1st row. When back measures 32 (34-36) cms. from beg, work 4 rows in rib st. (k1,p1). Cast off.

Front:

Work as for back for 30 (32-34) cms. from beg. Next row k 54 (58, 60), work eyelet patt, k to end. Cont. patt as set until front measures 32 (34, 36) cms. from beg.

To shape neckline and armhole :- Working over first 52 (54-56) sts. k6, k3 tog, k to end. P 1 row. Rep. these rows 5 times, then keeping 6 edge sts, dec 1 st at armhole edge on next 12 (14, 16) k rows. When armhole measures 12 (13, 14) cms. cont. straight on rem 28 sts. until strap measures 43 (45-47) cms. Cast off stitches.

Rejoin yarn and shape right front. K4, work eyelet patt. as set, k to last 10 sts, k 2 tog, k8.

Cont to dec. at edge as set on alt rows until 5 cms have been worked. Next row :- k4, k4 eyelet patt, k 11 (12, 13), k2 tog, k4 eyelet patt, k 9 (10, 11), k2 tog, k8. Cont as set until 18 (19, 20) dec in total at armhole edge and 11 (12, 13) dec in centre have been worked.

When armhole measures 12 (13, 14) cms beg. strap patt, k4, (k4 eyelet patt, k2) 3 times, k3.

When strap measures 43 (45, 47) cms cast off.

Finishing:

Sew up sides. Cross shoulder straps (once or twice, to the required length) and sew straps to back top edge, 12 cms. from side edges.

